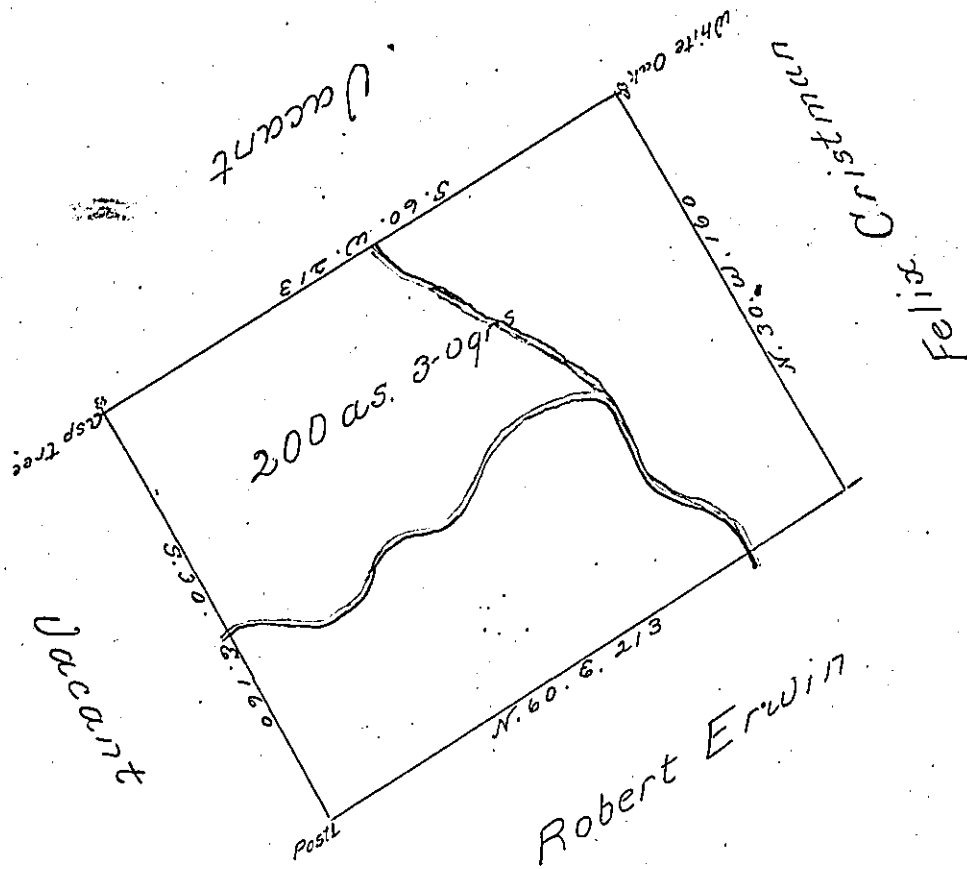


D-26

C133-108



A Draught of a Tract of Land Situate on the
 Branches of Plum run in Pinecreek Township Sur-
 veyd for Benjamin Walker by Virtue of a warrant
 dated the Sixth Day of Septe 1785 and No. 615 con-
 taining two hundred acres and three quarters -
 Surveyed the 13th of June 1786.

ps.

Thomas Tucker D.S.

To John Lukens Esqr. }
 Surveyor General }

IN TESTIMONY that the above is a copy of the original remaining on file in
 the Department of Internal Affairs of Pennsylvania, made
 conformably to an Act of Assembly approved the 16th day of
 February, 1833, I have hereunto set my Hand and caused
 the Seal of said Department to be affixed at Harrisburg,
 this second day of July 1901

James W. Patta
 Secretary of Internal Affairs.